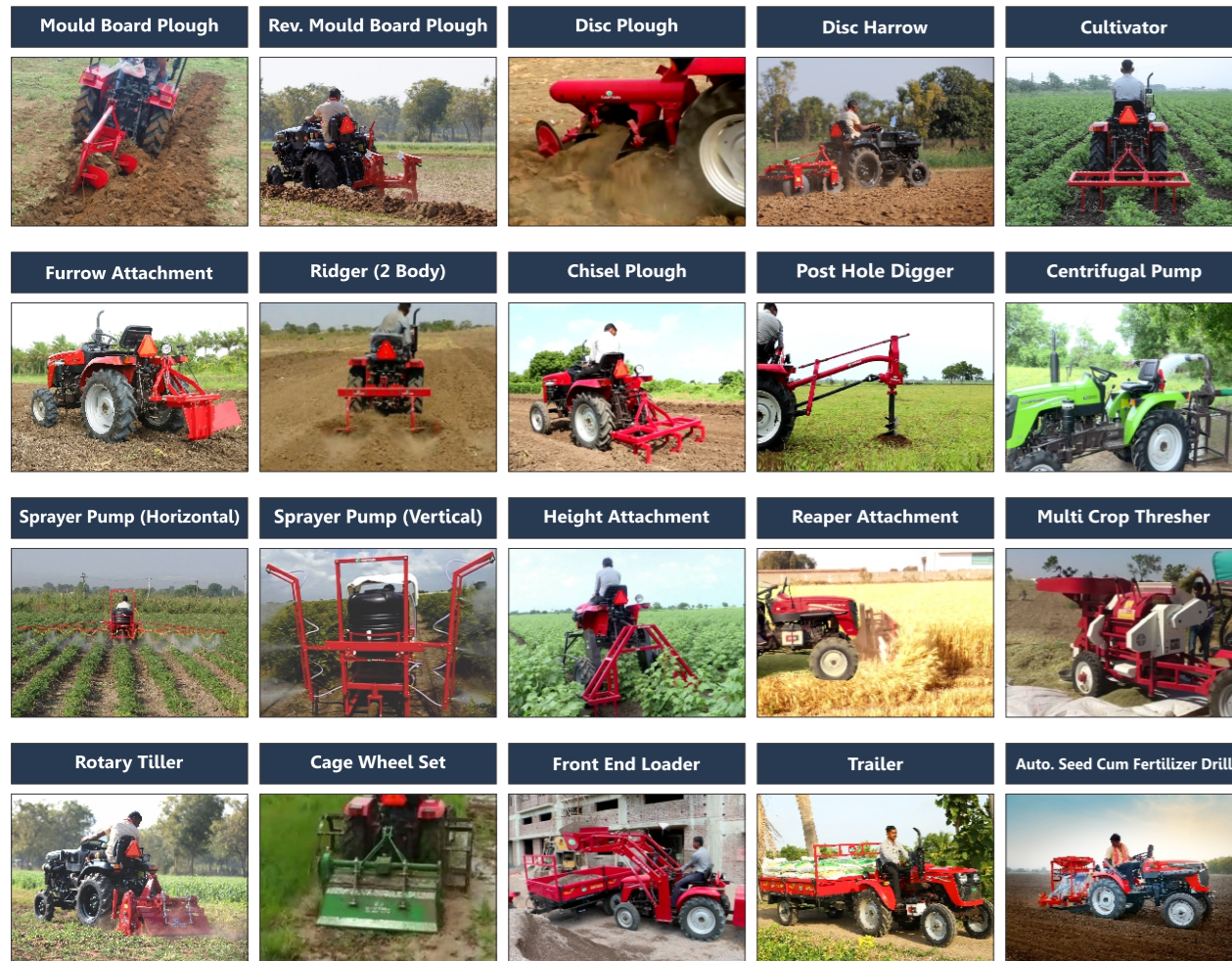


CAPTAIN FARM MECHANISATION SOLUTION



FRONT WHEEL TRACK OPTION (+-5%tolerance)

Size (mm/inch) - Standard	760 / 30	860 / 34
Size (mm/inch) - Optional	895 / 35	950 / 37

REAR WHEEL TRACK OPTION (+-5%tolerance)

Size (mm/inch) - Standard	811 / 32	811 / 32
Size (mm/inch) - Optional	705 / 28	845 / 33
	743 / 29	848 / 33
	845 / 33	883 / 35
	848 / 33	951 / 37
	883 / 35	988 / 39
	951 / 37	
	988 / 39	



Adjustable wheel track
28 Inch to 39 Inch

**ONE TRACTOR
SUITABLE FOR
MANY CROPS**

AUTHO. DEALER



*It goes beyond being just a TRACTOR
it symbolizes*

PRIDE OF THE FARMER



8G
THE EIGHTH
GENERATION

FIRST TIME IN INDIA

3 YEARS WARRANTY FOR

UNLIMITED

HOURS

Applicable On Deliveries After 15 October 2023

200 DI LS | 250 DI | 280 | 223 | 283

Applicable To Tractors Series

CAPTAIN TRACTORS PVT. LTD.

Head Office/Plant: Padavla Road, Veraval (Shapar), Tal: Kotda Sangani, Dist. Rajkot, (Gujarat) INDIA. Pin.: 360024, Phone: 97262 70707, 92280 18432.
Corporate Office: Twinstar Building, 15th Floor, South Block, 150 Feet Ring Road, Near Nana Mava Circle, Rajkot, (Gujarat) INDIA. Pincode 360005.

WIDEST RANGE OF COMPACT TRACTOR



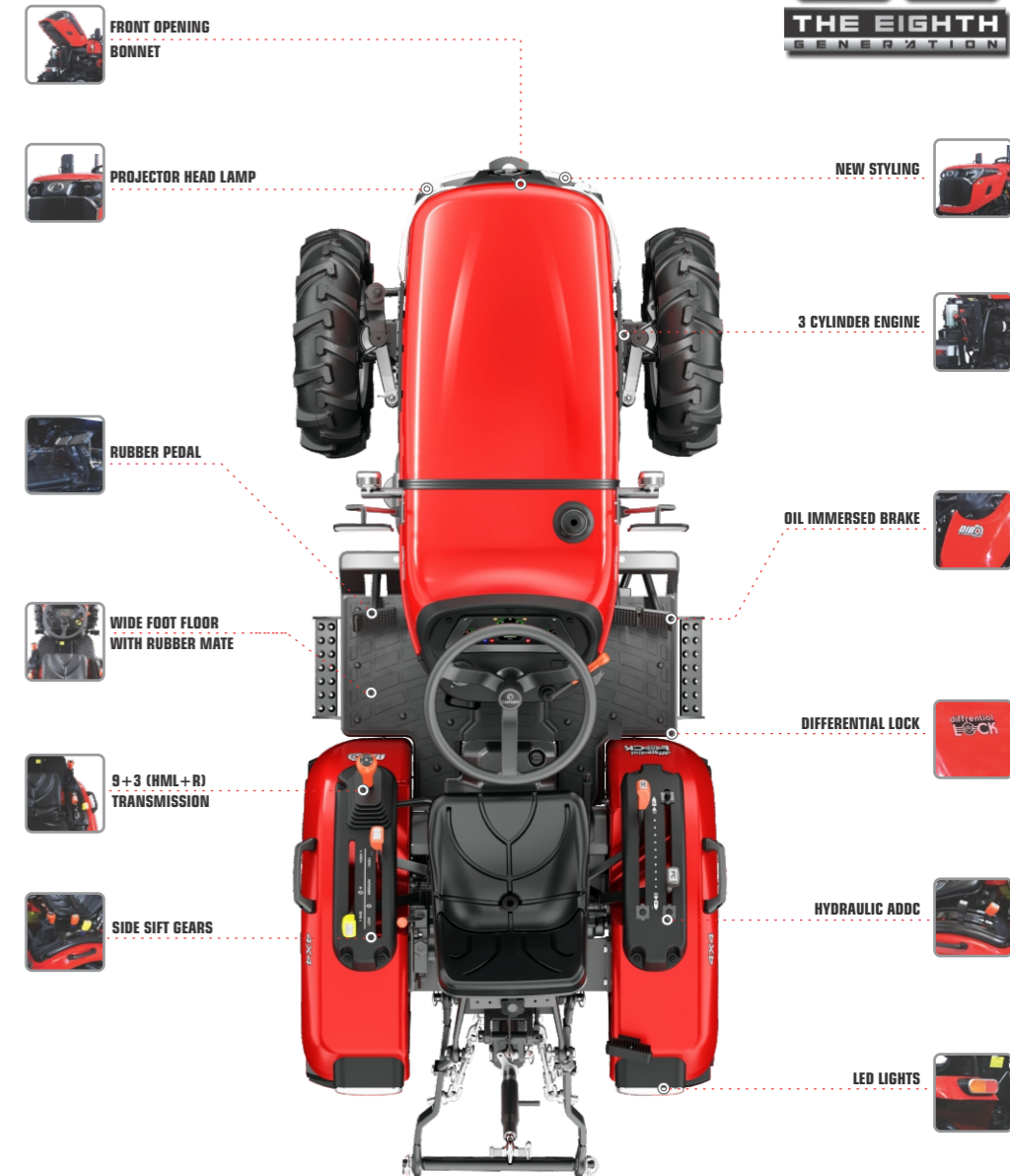
SPECIFICATIONS	120 DI 12 HP SERIES	200 DI LS 20 HP SERIES	250 2WD LS 25 HP SERIES	250 4WD LS 25 HP SERIES	280 2WD LS / 280 4WD 28 HP SERIES	280 DX 28 HP SERIES
Engine	No. of Cylinder Capacity (CC) Rated Speed (RPM) Cooling System Bore/Stroke (mm)	1 611 2200 Water Cooled 102/116	1 947.4 2200 Water Cooled 102/116	2 1290 2200 Water Cooled 95/91	2 1290 2200 Water Cooled 95/91	2 1290 2500 Water Cooled 95/91
Tyres	Front Rear	4.50 x 10 6.00 x 16	5.00 x 12 8.00 x 18	5.25 x 14 8.30 x 20	180/85 D12 5.00 x 12 8.3 x 20 8.00 x 18	5.00 x 15 9.5 x 24
Dimension (+/-5%)	Size (L x W x H) mm Weight (kg) Wheel Base (mm) Track Width (mm)	2258 x 921 x 1265 535 1240 Front : 680, Rear : 831	2650 x 1040 x 1320 890 1435 Front : 890, Rear : 811	2490 x 1110 x 1330 890 1490 Front : 860, Rear : 810 (Adjustable)	2690 x 1105 x 1360 960 1490 Front : 890, Rear : 810 (Adjustable)	2600 x 1240 x 1780 1000 1550 960 (1070 Adjustable)
Transmission	Type No. of Gear P.T.O. Speed Max. Speed Type of Brake	SlidingMesh Gears 6 Forward, 2 Reverse 540@ 2430 25.99 Shoe type	SlidingMesh Gears 9 Forward, 3 Reverse (H+M+L) 611 & 787 25 km/hr. Dry internal Exp. Water proof/ Oil Immersed Disc Brake	SlidingMesh Gears 9 Forward, 3 Reverse (H+M+L) 540@2550, 540E@1990 26.58 km/hr. Oil Immersed Disc Brake	SlidingMesh Gears 9 Forward, 3 Reverse (H+M+L) 540@2550, 540E@1990 23.13 km/hr. Oil Immersed Disc Brake	Synchromesh Gears 8 Forward, 2 Reverse 540@2400 27.6 km/hr. Oil Immersed Disc Brake
	Steering	Mechanical	Hydrostatic	Hydrostatic	Hydrostatic	Mechanical/Power Steering

Note: The above details are subject to change from time to time without any prior notice as per the policy of continuous improvement of the company.



SPECIFICATIONS	223 4WD 22 HP SERIES	283 4WD 27 HP SERIES	
Engine	No. of Cylinder Capacity (CC) Rated Speed (RPM) Cooling System Bore/Stroke (mm)	3 952 3000 Water Cooled 76/70	3 1318 2700 Water Cooled 78/92
Tyres	Front Rear	5.00 x 12 / 180 85D12 8.00 x 18 / 8.3 x 20	5.00 x 12 / 180 85D12 8.00 x 18 / 8.3 x 20
Dimension (+/-5%)	Size (L x W x H) mm Weight (kg) Wheel Base (mm) Track Width (mm)	2690 x 1080 x 1455 855 1490 880	2690 x 970 x 1430 880 1490 880 (910 Adjustable)
Transmission	Type No. of Gear P.T.O. Speed Max. Speed Type of Brake	SlidingMesh Gears 9 Forward, 3 Reverse (H+M+L) 648@1196, 540@1000 23.61 km/hr. Oil Immersed Disc Brake	SlidingMesh Gears 9 Forward, 3 Reverse (H+M+L) 540@2650, 540E@1990 25. km/hr. Oil Immersed Disc Brake
	Steering	Power Steering/Hydrostatic	Power Steering/Hydrostatic

Note: The above details are subject to change from time to time without any prior notice as per the policy of continuous improvement of the company.



*Features & Accessories shown in photographs may not be a part of the standard models.